



Specialist Drug & Alcohol Service

Activity Report

2013-2014

Referrals

A total of 1042 (67.3% male, 32.7% female) people were referred to the Service during 2013-14, a 27.7% increase on the previous year. The increase in referrals in areas outside Dumfries increased by 19-22% whilst referrals in Dumfries have increased by 35% above those recorded in 2012-13. The ratio of males to females was the same for both alcohol and drug related referrals.

The following table shows the pattern of referrals over the past 5 years

	1 Apr – 30 June	1 July – 30 Sep	1 Oct – 31 Dec	1 Jan – 31 March	Total
2009-10	207	227	232	198	864
2010-11	241	232	208	227	918
2011-12	213	214	207	235	869
2012-13	218	209	192	197	816
2013-14	242	289	261	250	1042

Client Contact Data

The following table shows the number of referrals received per client group, with information relating to current caseload, number of sessions provided and total number of contacts during the year. Referrals for people with alcohol problems rose by 20.5% (127) whilst referrals for drug related problems rose by 50.5% (99). This is the second year where an increase in drug related referrals has been noted following a period of 5 years with falling numbers of drug referrals.

The percentages of people referred that had no previous contact with the Service (31.7% alcohol and 21.7% drugs) was similar to that noted in 2012-13. The number of people in contact with the Service at 31st March 2014 is similar to that at the beginning of the year. It had been anticipated that the number of people with drug problems in contact with the service would reduce as new GP practices (Charlotte Medical Practice, Wigtown Medical Practice & Whithorn Surgery) agreed to provide care under the Local Enhance Service for Drug Related Problems but to date this has not changed the number of people in contact with the Service.

The following table sets out the information described above.

	Total	Alcohol	Drugs
Number of clients on books at 31 March 2013	560	155(27.7%)	405(72.3%)
Number of referrals	1042	747(71.7%)	295(28.3%)
Number with no previous contact with Service	301(28.9%)	237(31.7%)	64(21.7%)
Number of clients taken on 1 April 12 – 31 March 13	823	581(70.6%)	242(29.4%)
Number of clients on books at 31 March 2014	579	160(27.6%)	419(72.4%)

The following table shows the number of appointments offered with details of the rates of cancelled and failed appointments, which are in line with those recorded in the previous year. The reduction in failed appointments and increase in cancelled appointments noted in the past 2 years has been maintained with a 9% increase in appointments offered.

Number of individual sessions offered	15043
Number of individual sessions attended	10164
Number of cancelled appointments	1940(12.9%)
Number of DNA appointments	2939(19.5%)
No of drop-ins, non-client contacts	833
Total number of contacts	10997

The majority of referrals (84%) for drug related problems was for people using heroin or prescribed methadone (people released from prison or transferring from GP care). Polysubstance use remains a common feature in Dumfries & Galloway with illicit diazepam and alcohol common features in reported substance use. The trend of injecting MCAT alone or mixed with heroin has continued and is linked to an increase in serious injection site infections.

Drug	Females	Males	Total
Amphetamine	1(0.1%)	3(1.5%)	4(1.4%)
Cannabis	6(6.0%)	8(4.1%)	14(4.7%)
Cocaine	0(0%)	3(1.5%)	3(1.0%)
Ecstasy	1(0.1%)	1(0.5%)	2(0.7%)
Benzodiazepines	1(0.1%)	7(3.6%)	8(2.7%)
Heroin	65(65.0%)	111(56.9%)	176(59.7%)
Methadone	21(21.0%)	52(26.7%)	73(24.7%)
Dihydrocodeine	2(2.0%)	4(2.1%)	6(2.0%)
Solvents	0(0%)	1(0.5%)	1(0.3%)
Over the counter	3(3.0%)	5(2.6%)	8(2.7%)
Total	100(100%)	195(100%)	295(100%)

Exchange data

There was a 1% increase recorded in the number of needles supplied compared with 2012-13 but the number of needles issued remains lower than recorded in the past 5 years. There is no longer a requirement to count returns with estimates given for the contents of sealed sharps' containers.

	Items Given Out	Estimated Items Returned	Percentage
010413 – 300613	22489	21088	93.8%
010713 – 300913	20450	17224	84.2%
011013 – 311213	21625	17804	82.3%
010114 – 310314	18133	19794	109.2%
Total	82697	75910	91.8%

There has been a 75% (955) increase in the number of foil packs (50 sheets per pack) issued. This is due to service users choosing to smoke rather than inject their drugs. Whilst some will have made this decision to reduce the risks associated with IV use others will have had to make this change as they no longer have accessible veins.

Waiting Times

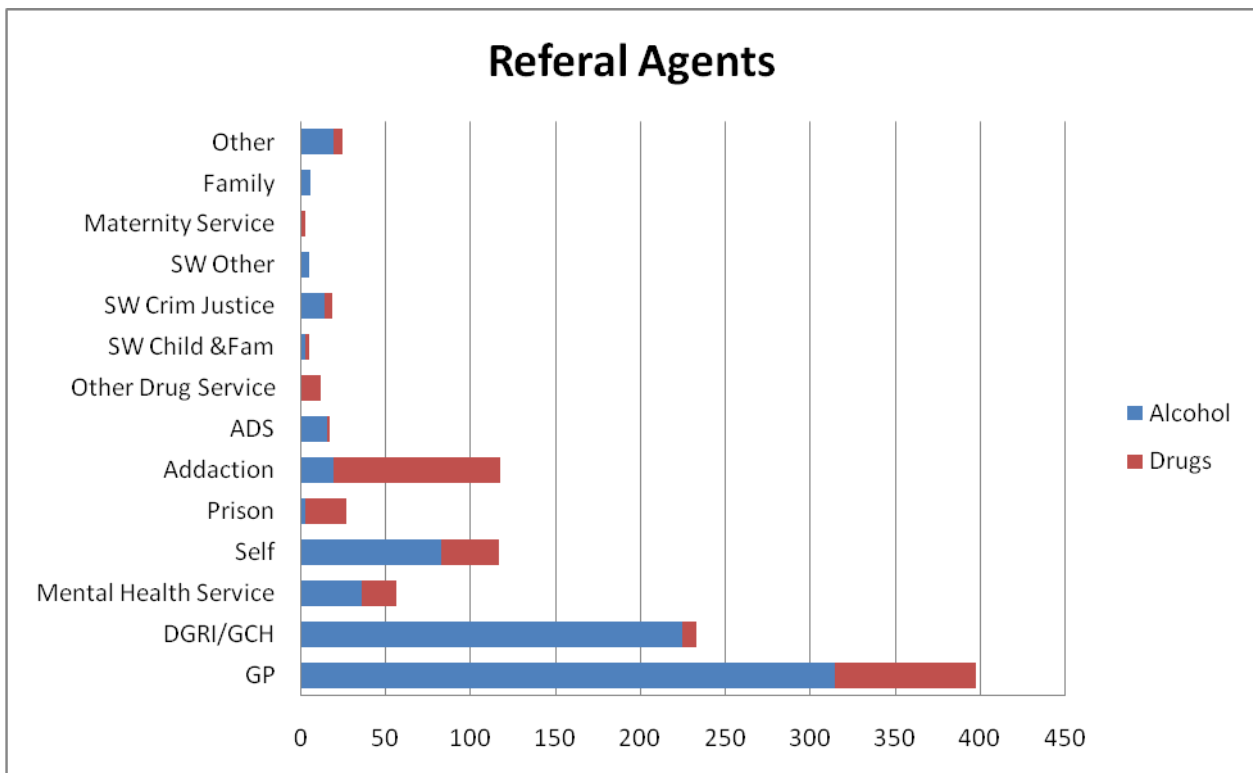
The HEAT target sets out that 90% of people accessing Alcohol and Drug Services should commence treatment within 3 weeks of their date of referral. During 2013-14 98% people accessing treatment with this Service were seen within 3 weeks of their date of referral compared with 88% in 2012-13.

Referral Agents

The overall referral patterns were broadly similar to last year with 69% of referrals coming from other healthcare settings. There was a 52% (137) increase in the number of referrals coming from GPs (52% alcohol, 53% drugs) this may be related to the introduction of electronic referrals via Sci Store making the referral process more streamlined. The other group of referrals which recorded a significant increase was those coming from Addaction (40%) and increase of 34 referrals.

The following table and graph detail information of referrals received by referral agent.

Referral Agent	Alcohol	Drugs	Total
General Practitioner	315(42.2%)	83(28.1%)	398(38.2%)
DGRI/Galloway Hospital	225(30.1%)	8(2.7%)	233(22.4%)
Mental Health Service	36(4.8%)	21(7.1%)	57(5.5%)
Self	83(11.1%)	34(11.5%)	117(11.2%)
Prison	3(0.4%)	24(8.1%)	27(2.6%)
Addaction	20(2.7%)	98(33.2%)	118(11.3%)
Alc & Drug Support - SW Scotland	16(2.1%)	1(0.3%)	17(1.6%)
Other Drug Service	1(0.1%)	11(3.7%)	12(1.2%)
Social Work (child & fam)	3(0.4%)	2(0.7%)	5(0.5%)
Social Work (Crim Justice)	14(1.9%)	5(1.7%)	19(1.8%)
Social Work (other)	5(0.7%)	0(0%)	5(0.5%)
Maternity Services	0(0%)	3(1.0%)	3(0.3%)
Family	6(0.8%)	0(0%)	6(0.6%)
Other	20(2.7%)	5(1.7%)	25(2.4%)
Total	747(100%)	295(100%)	1042(100%)



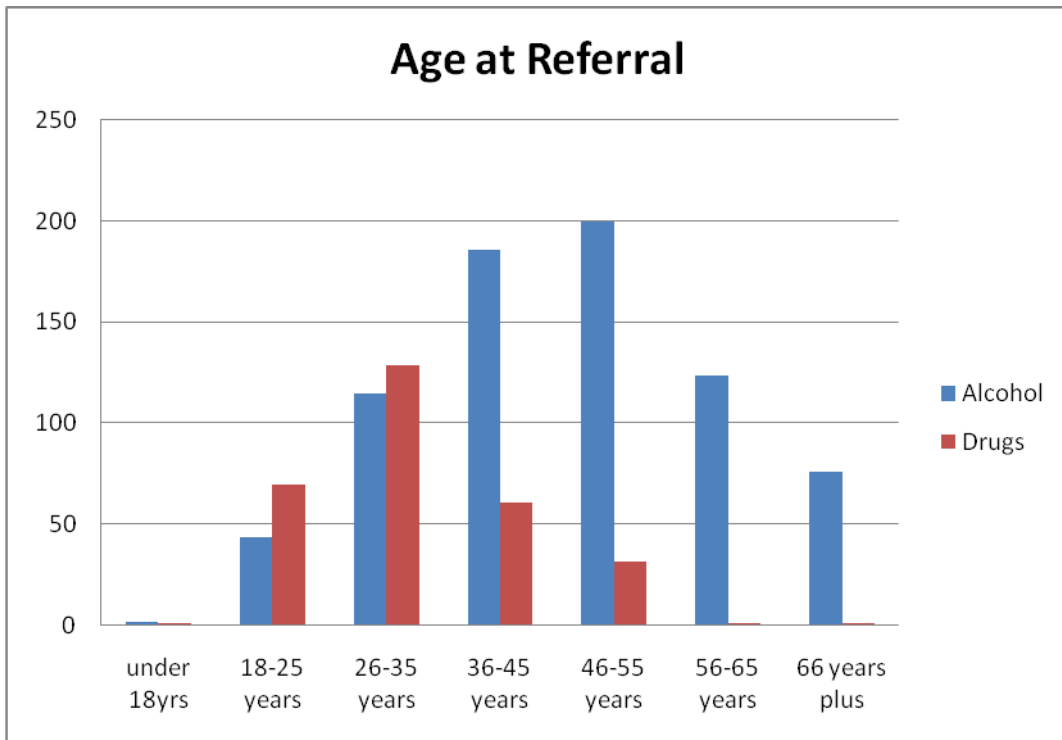
Referrals by Age

The age profile of referrals is generally in line with that of previous years with the reduction in referrals for people aged 18-25 noted in earlier reports appearing to have stabilised. The increase in alcohol

referrals was spread equally across all age ranges above 26 years but the majority of the increase in drug referrals was recorded in people aged 18 to 35 years.

This age profile is illustrated in the following chart and table.

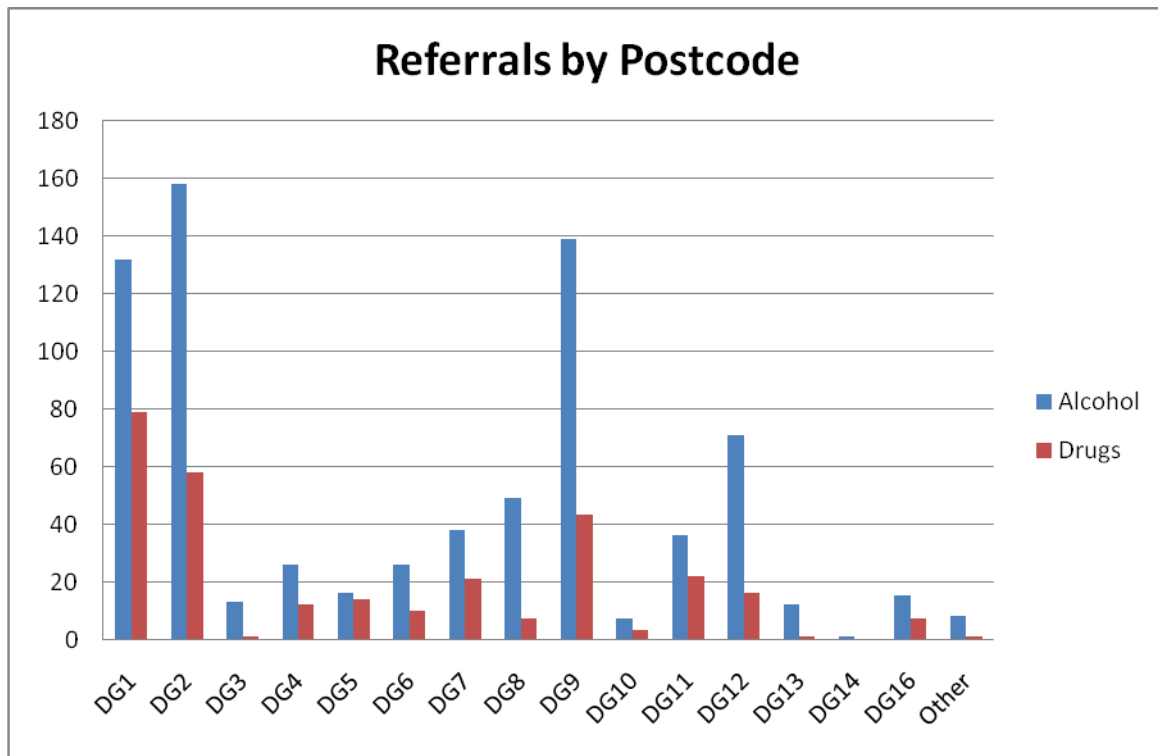
	Alcohol	Drugs	Total
Under 18 years	2(0.3%)	1(0.3%)	3(0.3%)
18 – 25 years	44(5.9%)	70(23.7%)	114(10.9%)
26 – 35 years	115(15.4%)	129(43.7%)	244(23.4%)
36 – 45 years	186(24.9%)	61(20.7%)	247(23.7%)
46 – 55 years	200(26.8%)	32(10.8%)	232(22.3%)
56 – 65 years	124(16.6%)	1(0.3%)	125(12.0%)
Over 66 years	76(10.2%)	1(0.3%)	77(7.4%)
Total	747(100%)	295(100%)	1042(100%)

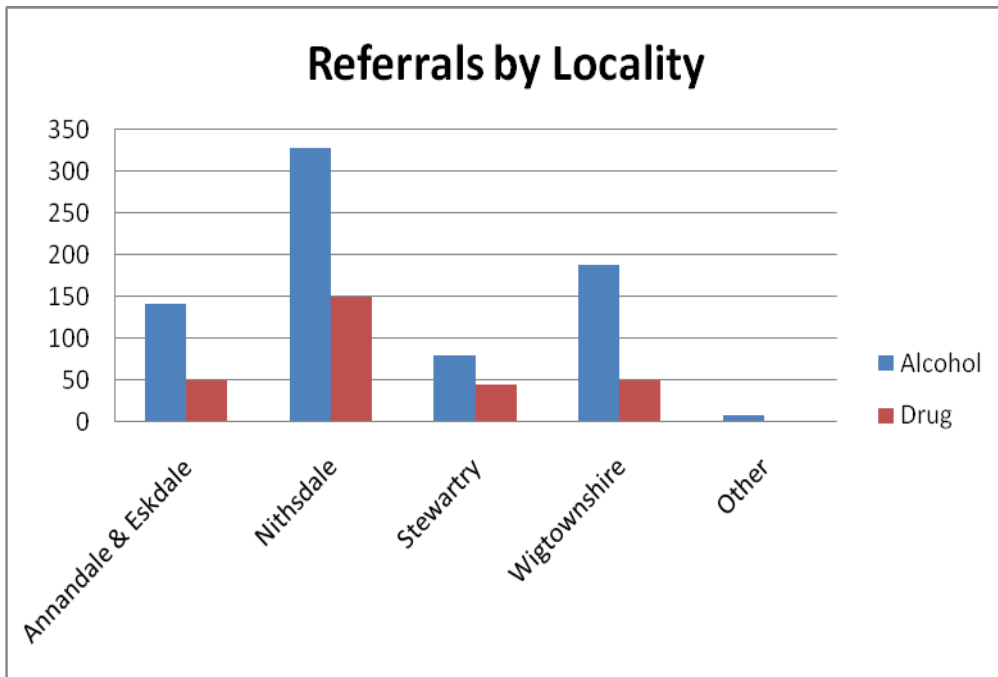


Referrals by Locality

Referrals in Dumfries have increased by 35% (110) compared with the previous 12 months whilst Team East recorded a 19% (60) increase in referrals and Team West recorded a 22% (43) increase. The following table and charts illustrate the geographical spread of referrals received.

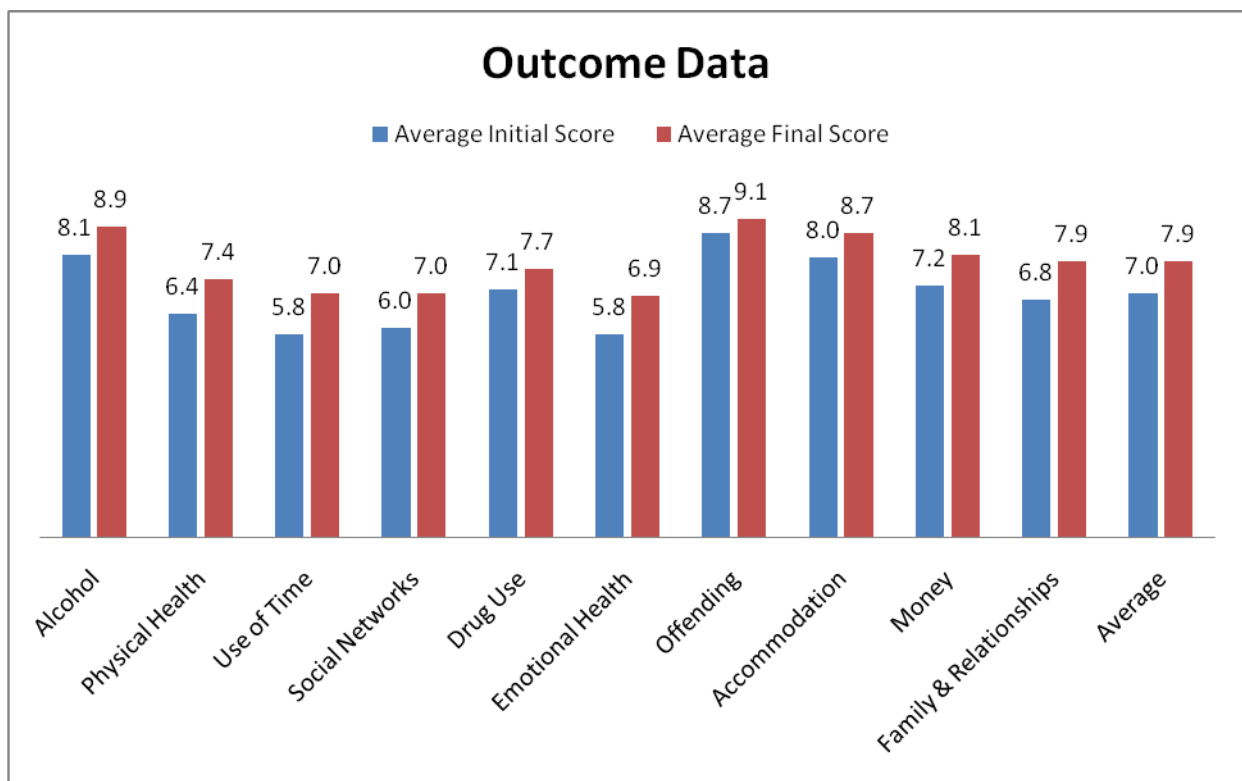
	Alcohol	Drugs	Total
DG1	132(12.7%)	79(7.6%)	211(20.2%)
DG2	158(15.2%)	58(5.6%)	216(20.7%)
Dumfries	290(27.8%)	137(13.1%)	427(41.0%)
DG3	13(1.2%)	1(0.1%)	14(1.3%)
DG4	26(2.4%)	12(1.2%)	38(3.6%)
DG5	16(1.5%)	14(1.3%)	30(2.9%)
DG6	26(2.5%)	10(1.0%)	36(3.5%)
DG7	38(3.6%)	21(2.0%)	59(5.7%)
DG10	7(0.7%)	3(0.3%)	10(1.0%)
DG11	36(3.5%)	22(2.1%)	58(5.6%)
DG12	71(6.8%)	16(1.5%)	87(8.3%)
DG13	12(1.2%)	1(0.1%)	13(1.2%)
DG14	1(0.1%)	0(0%)	1(0.1%)
DG16	15(1.4%)	7(0.7%)	22(2.1%)
Team East	261(25.0%)	107(10.3%)	368(35.3%)
DG8	49(4.7%)	7(0.7%)	56(5.4%)
DG9	139(13.3%)	43(4.1%)	182(17.5%)
Team West	188(18.0%)	50(4.8%)	238(22.8%)
Other	8(0.8%)	1(0.1%)	9(0.9%)
Total	747(71.7%)	295(28.3%)	1042(100%)



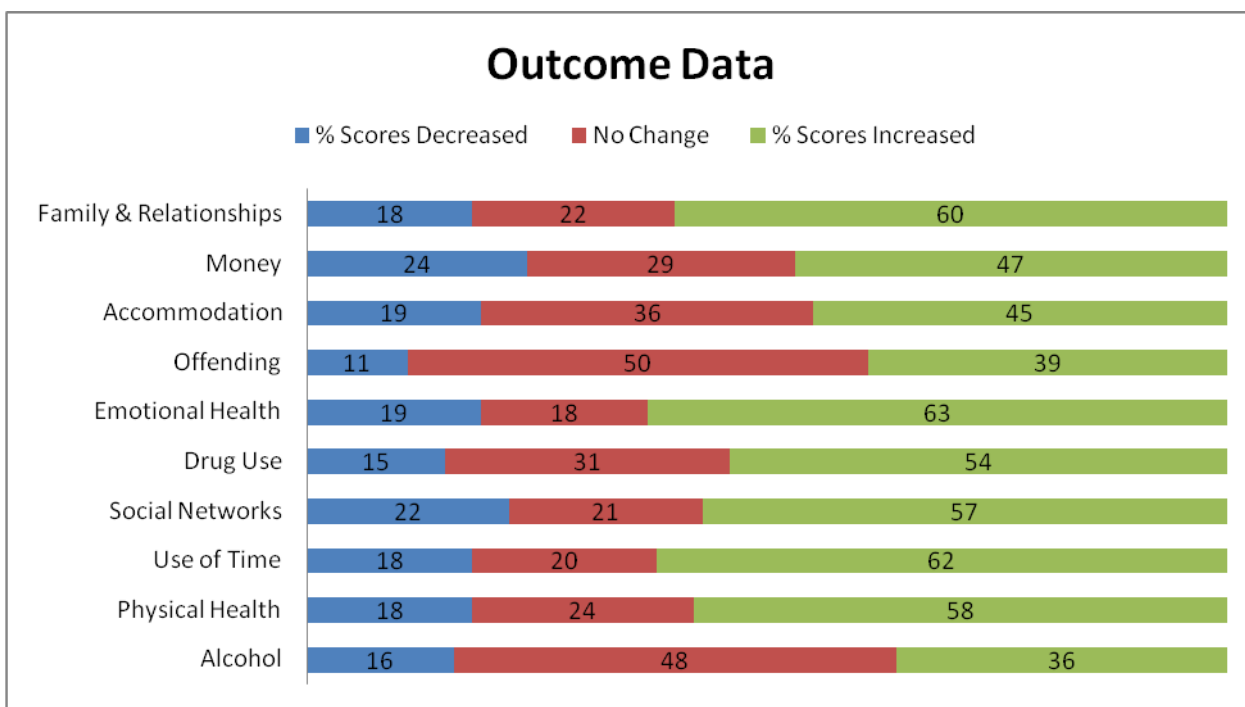


Outcome Data

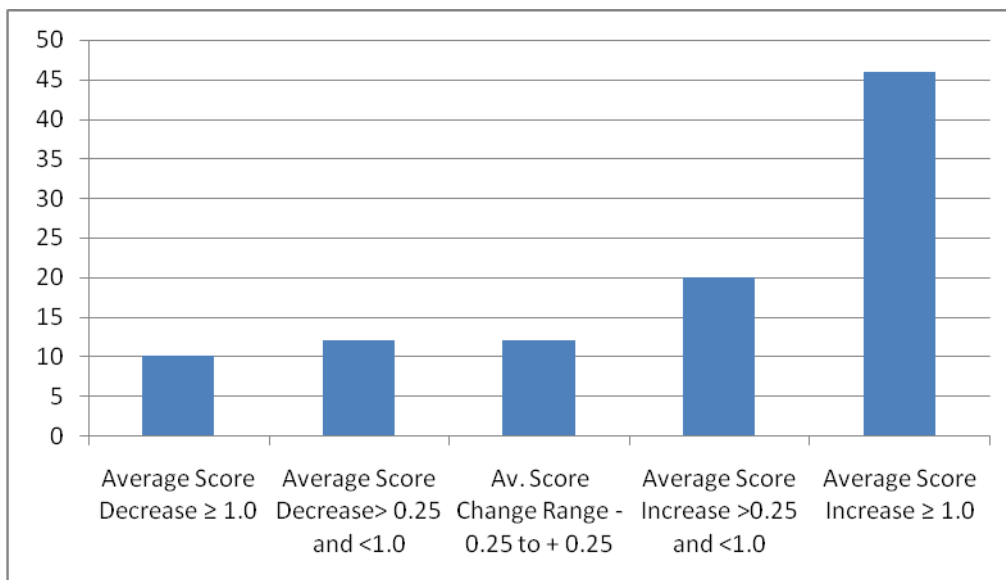
The data reported below relates to 377 service users who had at least one review completed during 2013-14. The first graph shows data relating to the average initial and final score with increases (improved scores) recorded against all 10 criteria. The lowest initial scores were noted in areas covering use of time, social networks and emotional health with the highest final scores in areas relating alcohol and drug use, offending and accommodation. The outcome data illustrates the same trends as recorded in 2012-13.



The second graph shows the proportion of the 377 service users whose score for each criterion has increased, decreased or stayed the same.



In reviewing the percentage change for all service users to identify the proportion who may be slipping back or not moving forward the data shows that 66% of people showed an increase in their overall score with 46% recording a “big” increase as set by Triangle Consulting (average point on scale increased by more than 1 point)



One point worth noting when considering the outcome data is that “no change” recorded for a score may not in itself be a negative assessment if the individual service user was already achieving a high score for that part of the Outcome Star when they entered treatment e.g. if they were not offending then they would score 10 at point of initial assessment or if using only alcohol or drugs would score 10 for the other data point on the Star. For purpose of the report no change means that the average change per scale was between -0.25 and +0.25.

Discharge Data

Of the 967 people discharged from the service, 649 (67%) were planned discharges, compared with 70% of discharges during 2012-13.

The following table provides details of recorded discharge data.

	Alcohol	Drugs	Total
Completed programme of care	237	60	297
Transferred to another agency	118	90	208
No longer seeking help	117	27	144
Planned Discharges	472(48.8%)	177(18.3%)	649(67.1%)
Did not complete programme of care	60	21	81
Did not attend	148	56	204
In prison	3	24	27
Deceased	3	3	6
Unplanned Discharges	214(22.1%)	104(10.8%)	318(32.9%)
Total	686(70.9%)	281(29.1%)	967(100%)

Current Projects and Developments

Team members are involved in a number of projects as listed below which will be reported on more fully in 2015.

- Development of Psychological Interventions (MI, Trauma Work)
- LGBT Charter Mark
- Third Party Reporting Centre for Hate Crime
- Sexual Health – provision of long-acting contraception
- Frequent Attenders at Emergency Department
- Improved links with Surgical Assessment Unit
- Development of a multiagency antennal clinic at Galloway Community Hospital
- Service User Recovery Workshop
- Involvement in Early Years Collaborative
- Review of Documentation
- Scottish Drug Forum Service User & Staff Survey

More information about the above projects is available from the Service on 01387 244555.

MOIRA COSSAR
SERVICE MANAGER